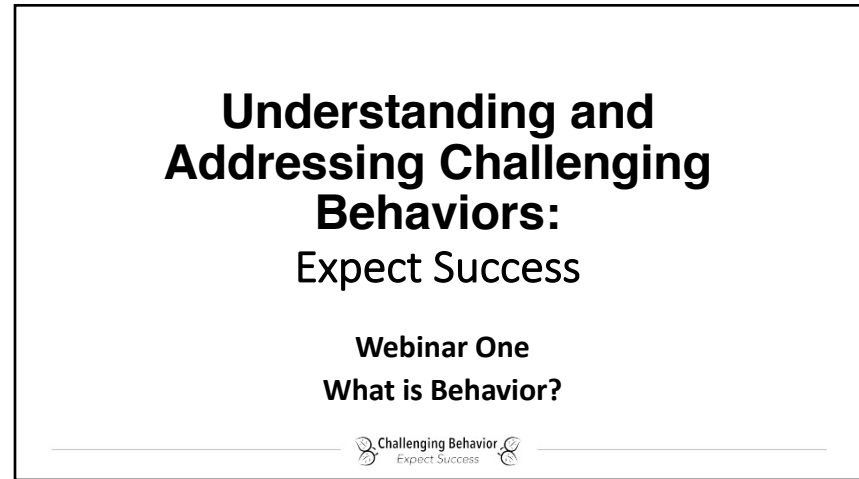
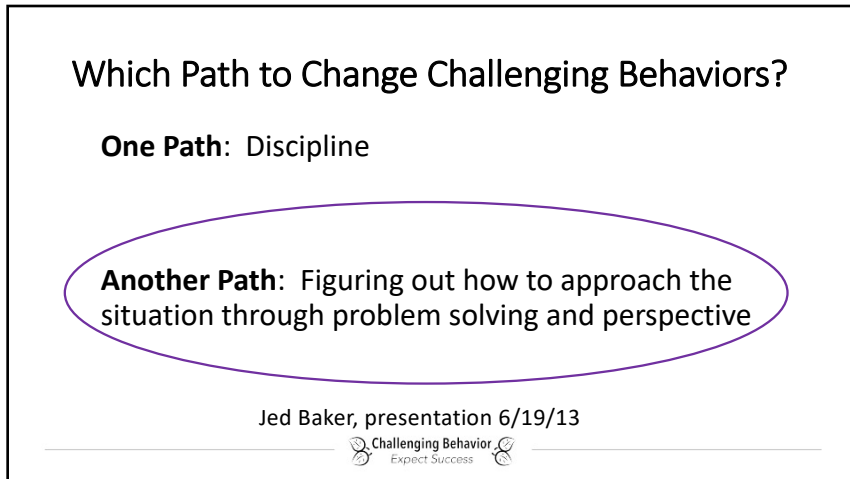




1



2



3



4

### Behavior is...

- The way someone acts in response to a stimulus or a particular situation
- Observable activity in a human
- Usually measured by common accepted standards



5

### Behavior is Determined By:

- Organic Factors: genetics, physical attributes, biological neurological, or psychological factors
- Environmental Factors: previous experiences, history of reinforcement, learned behaviors and skills



6

Sometimes we throw everything at the behavior hoping something will work...



but we miss the mark.



7

Sometimes we put all our effort into one intervention...



and still miss the mark.



8

Sometimes we can't even agree...

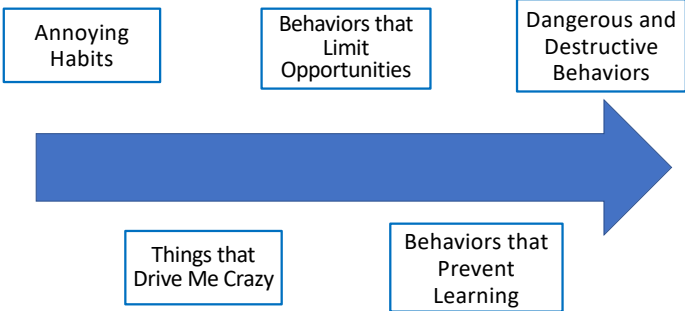


if the behavior is a problem!

Challenging Behavior  
Expect Success

9

### The Behavior Continuum



Annoying Habits

Behaviors that Limit Opportunities

Dangerous and Destructive Behaviors

Things that Drive Me Crazy

Behaviors that Prevent Learning

Challenging Behavior  
Expect Success

10

### Behavior is a problem when...

- Dangerous to the individual/others
- Interferes with academic learning
- Interfere with socialization and/or acceptance from peers/community
- Disruptive or intense on a frequent basis

*Need to examine frequency, duration, intensity, overall impact using gathered data*

Challenging Behavior  
Expect Success

11

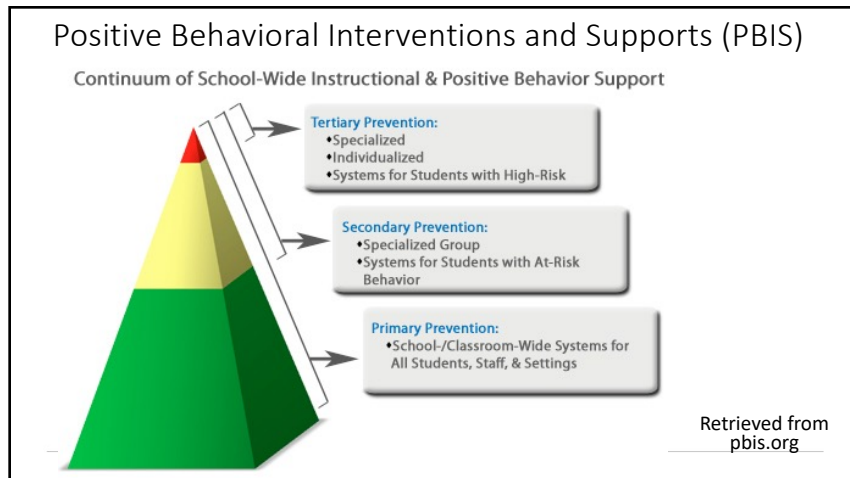
### Behavior and the IEP

“The IEP team must: In the case of a child whose behavior impedes the child’s learning or that of others, consider the use of **positive behavioral interventions and supports**, and other strategies, to address that behavior.”

Operating Standards for Ohio Educational Agencies Serving Children with Disabilities (3301-51-07 p.134)

Challenging Behavior  
Expect Success

12



13

## Expect Success Principles Support PBIS Principles

- **Scientifically based** behavior and academic intervention
- Use **data** to make decisions
- Consider and arrange the **environment**
- Teach **prosocial skills** and behaviors
- Implement **EBP with fidelity** and accountability
- Ongoing student **progress monitoring**

14